

joint-stock  
company

# COMPRESSOR





joint-stock  
company

# COMPRESSOR

Enterprise was founded in 1877



64, B. Sampsonievskiy Prospekt, Saint-Petersburg, 194044, Russia. Telefax: (+7-812) 596-33-97;  
Telephone: (+7-812) 245-50-90. E-mail: office@compressor.spb.ru, http: //www. compressor.spb.ru

## OFFERS PRODUCTION, MADE TO COMPANY DESIGN

(in sea and  
general industrial  
version)

- COMPRESSORS AND STATIONS FOR COMPRESSION OF AIR, NATURAL GAS, HYDROGEN AND OTHER GASES
- UNITS AND SYSTEMS FOR PURIFYING AND DRYING AIR AND GASES FROM MOISTURE, OIL AND MECHANICAL IMPURITIES
- GAS-BALLOON APPARATUS FOR CARS
- SHIPBOARD TONNAGE EQUIPMENT

Automated, with drive from electromotor, high-pressure piston for air compression

Index	Functional diagram	Delivery, m <sup>3</sup> /h	Terminal pressure, kgf/cm <sup>2</sup>	Consumed power, kW	Dimensions, mm			Mass, kg
					Length	Width	Height	
CKAB1		24	400	20	1300	835	930	1000
ЭК 0,9В		12	200	7,5	1164	786	730	683
ЭКГ 0.25/100 (hydrogen)		15	100	9,3	980	690	800	520
ЭК3-1М		30	64-230	10-16,5	1380	800	1045	800
ЭК3-1МС		30	150-200	16,5	1380	800	1045	880
ЭК7,5-3		140	200-400	68-74	1940	1060	1550	2273
ЭК10-3		190	200-400	75-85	2000	1000	1350	2590
ЭКСА7,5-3М-1		135	200-400	75-80	1915	1150	1540	3870
ЕКСА10		200	200-400	80-85	1915	1150	1640	4000
ЭК30А-2		600	200-400	235	2445	1580	1455	3800
ЭКСА25-1	475	400	190	3500	1585	1825	8000	
ГКВ2А		24	200	12	1770	1060	1100	1680
КСВА7,5		140	200-400	74	3250	1350	1650	6800



ЭК3-1



ЭКСА7,5-3М1



КСВА7,5



**Autonomous, not requiring mass foundation, free-piston diesel-compressors for air compression**

**DK2-3P**

Index	Functional diagram	Delivery, m <sup>3</sup> /h	Terminal pressure, kgf/cm <sup>2</sup>	Consumed power, h. p.	Dimensions, mm			Mass, kg
					Length	Width	Height	
DK2-3P		110	150-230	65	2200	940	910	1060
DK10-2P		180	230-400	130	3015	900	1110	2240
18DKCP		180	230-400	130	3015	975	1220	3570



**Automated piston compressors with water and air cooling for starting diesel installations and other manufacturing needs**

Index	Functional diagram	Delivery, m <sup>3</sup> /h	Terminal pressure, kgf/cm <sup>2</sup>	Consumed power, kW	Dimensions, mm			Mass, kg
					Length	Width	Height	
1ЭКПВ30/32		30	25-32	11	1460	850	1190	790
1ЭКПВ50/32		50	25-32	14,5	1460	850	1190	850
1ЭКПВ70/32M		70	25-32	19,7	1460	850	1190	840
1ЭКПВ140/32		125	25-32	33	1520	690	1230	1130
1ЭКПВ210/32		195	25-32	48,5	1520	690	1230	1150
ЭКПВ15/32		15	32	5,5	885	590	685	
ЭКПВ15/64		15	64	7,5	885	590	685	195
ЭКПВ30/32		30±5%	32	10,0	1010	730	680	340
ЭКПВ30/64		30±5%	64	10,5	1010	730	680	340

**Automated low-pressure piston compressors for general industrial purposes and shipboard needs**

Index	Functional diagram	Delivery, m <sup>3</sup> /h	Terminal pressure, kgf/cm <sup>2</sup>	Consumed power, kW	Dimensions, mm			Mass, kg
					Length	Width	Height	
1ЭКВ180/10		180	10	31	1520	940	1420	1160
1ЭКВ280/7		265	7	45	1520	940	1230	1160
1ЭКВ275/9		260	9	45	1520	940	1230	1160
1ЭКВ220/15		220	15	47	1520	940	1230	1160
1ЭКВ240/13		240	13	46	1520	940	1230	1160



**Automated piston compressors for starting high-rotative diesel installations and other needs (analog of k2-150 type compressors)**

Index	Functional diagram	Delivery, m <sup>3</sup> /h	Terminal pressure, kgf/cm <sup>2</sup>	Consumed power, kW	Cooling type	Dimensions, mm			Mass, kg
						Length	Width	Height	
1ЭКПВ15/150 - with electromotor - without electromotor		15	64, 150, 200	8,6	RUNNING WATER	990	560	675	310
						500	560	675	137
1ЭКПВ15/150Г (frequency - 400 герц)		15	150	12,7		1110	560	810	290
ЭКПВ15/150Р		15	150, 200	10,45	RADIATOR SYSTEM	1430	650	675	341
ЭКПВ15/150В (on. motor)		15	150, 200	8,6		1235	650	675	320

**Automated piston compressors for nuclear and heat energy stations, air switches of high-voltage power transmission lines and other needs**

Index	Delivery, m <sup>3</sup> /h	Terminal pressure, kgf/cm <sup>2</sup>	Consumed power, kW	Dimensions, mm			Mass, kg
				Length	Width	Height	
ЭКЗ-1	30	45-230	9-16,5	1380	800	1045	800
СКАВ6	6	35	5	1000	600	600	150
1ЭКВ140/40	140	40	45	1894	1150	1336	2123
1ЭКВ140/100	140	100	49	1894	1150	1336	2123
1ЭКВ140/230	140	230	65	1894	1150	1336	2168
1ЭКВ190/40	190	40	60	1894	1150	1311	1988
1ЭКВ190/100	190	100	62	1894	1150	1311	1988
1ЭКВ190/230	190	230	68	1894	1150	1336	2123



**START-2**

**Piston compressors with air cooling for supplying purified compressed air to agualungist, divers, firemen, rescuers using isolating respirators**

Index	Delivery, m <sup>3</sup> /h	Terminal pressure, kgf/cm <sup>2</sup>	Consumed power, kW	Dimensions, mm			Mass, kg
				Length	Width	Height	
СКАВ20/30	20	300	13	1200	700	700	200
СТАРТ-1М (electrocompressor)	3,4	200	3	740	480	370	78
СТАРТ-2 (motor-driven compressor)	2	200	2,2	700	420	420	36



## SCREW COMPRESSORS

Index	Delivery, m <sup>3</sup> /h	Terminal pressure, kgf/cm <sup>2</sup>	Consumed power, kW	Dimensions, mm			Mass, kg
				Length	Width	Height	
BK-0/5	0,65; 0,54; 0,43	8; 10; 13	4,0	605	945	900	190
BK-0,8	0,88; 0,78; 0,65	8; 10; 13	5,5	605	945	900	190
BK-1	1,2; 1,07; 0,87	8; 10; 13	7,5	605	945	900	190
BK-1,5	1,7; 1,5; 1,32	8; 10; 13	11,0	605	945	900	220
BK-2	2,24; 1,98; 1,63	8; 10; 13	15,0	605	945	900	235
BK-2,5	2,52; 2,17; 1,75	8; 10; 13	15,0	795	1270	11700	435
BK-2,8	2,97; 3,62; 2,27	8; 10; 13	18,5	795	1270	11700	450
BK-3	3,54; 3,12; 2,67	8; 10; 13	22,0	795	1270	11700	485
BK-4	4,60; 4,12; 3,40	8; 10; 13	30,0	795	1270	11700	585
BK-5	5,78; 5,15; 4,42	8; 10; 13	37,0	795	1270	11700	595
BK-6	5,97; 5,57; 4,60	8; 10; 13	37,0	1520	850	1355	830
BK-8	8,07; 7,04; 5,50	8; 10; 13	45,0	1520	850	1355	900
BK-10	9,37; 8,6; 7,0	8; 10; 13	55,0	1520	850	1355	1000
BK-11	11,86; 10,4; 9,10	8; 10; 13	75,0	1520	850	1355	1050
BK-12	12,9; 11,45; 10,0	8; 10; 13	75,0	2300	1400	1525	1925
BK-15	15,53; 13,54; 11,90	8; 10; 13	90,0	2300	1400	1525	2000
BK-18	18,24; 16,06; 14,25	8; 10; 13	110,0	2300	1400	1525	2300
BK-20	20,47; 18,04; 16,0	8; 10; 13	132,0	2300	1400	1525	2400
BK-25	26,84; 24,65; 21,18	8; 10; 13	160,0	2300	1400	1525	3200
BK-30	30,15; 28,84; 24,95	8; 10; 13	200,0	2300	1400	1525	3400



## Automated membrane compressors with drive from electromotor for pumping over nitrogen and oxygen

**ЭКГМ200/220**

Index	Delivery, m <sup>3</sup> /h	Terminal pressure, kgf/cm <sup>2</sup>	Consumed power, kW	Dimensions, mm			Mass, kg
				Length	Width	Height	
ЭКГМ 35/200P (nitrogen)	35	200	30	2200	1480	1600	4510
ЭКГМ 350/350A (nitrogen)	350	350	30	2500	1450	1880	5100
ЭКГМ 200/220 (oxygen)	200	220	36	2320	1550	1880	5400
ЭКГМ 140/280 (oxygen)	140	280	38	2100	1500	1880	5300



## Units for drying and purifying high-pressure compressed air from moisture, oil and mechanical impurities

Index	Capacity, m <sup>3</sup> /h	Working pressure, kgf/cm <sup>2</sup>	Dimensions, mm			Mass, kg
			Length	Width	Height	
10 Б0-2	600	400	1100	500	1510	590
19 Б0	32	200	580	470	1205	215
28 Б0	200	400	950	525	1330	450
29 Б0-1	32	200	780	575	1175	320
41 Б0	24	400	580	600	1210	210
42 Б0	20	300	450	190	1445	120

## Units and systems for drying and purifying low-pressure and average-pressure compressed air from moisture, oil and mechanical impurities

Index	Capacity, m <sup>3</sup> /h	Working pressure, kgf/cm <sup>2</sup>	Dimensions, mm			Mass, kg
			Length	Width	Height	
24Б0	70	25	1120	550	1230	340
32Б0-1	5	45	400	500	1350	235
БООП	280	10	488	406	1255	130
СООБ	70-280	9-40	480	340	715	70



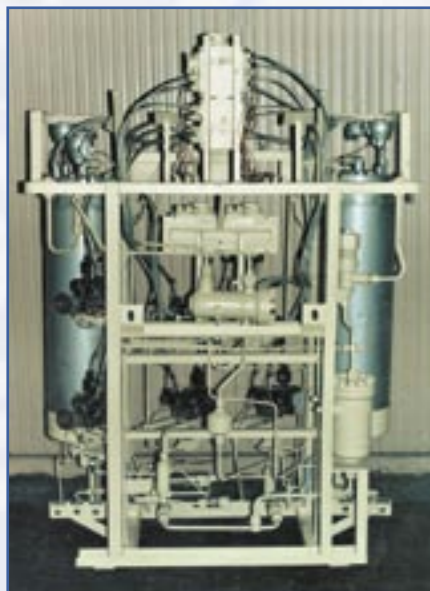
## Equipment for producing compressed natural gas

Car gasfilled compressor station АГНКС БК-75 in unit-container version for filling gas-balloon cars with compressed natural gas:  
 gas pressure: inlet – 1-12 kg/cm<sup>2</sup>;  
 outlet – 250 kg/cm<sup>2</sup>;  
 number of fillings during twenty-four hours – 75.



## Automated compressor units with piston compressors for compression natural gas

Index	Delivery, m <sup>3</sup> /h	Pressure, kgf/cm <sup>2</sup>		Power, kW	Dimensions, mm			Mass, kg
		Inlet	Outlet		Length	Width	Height	
КУПГ with gas ICE (n=1200 r/m)	225-370	1-12	250	55-75	2800	1200	1800	3300
ЭКУПГ with electromotor (n=1000 r/min)	180-300			46-65	2100	1200	1650	2100



## Units for drying and purifying compressed natural gas from moisture, oil and mechanical impurities

Index	Capacity, m <sup>3</sup> /h	Working pressure, kgf/cm <sup>2</sup>	Dimensions, mm			Mass, kg	Note
			Length	Width	Height		
БОПГ	270	250	1340	555	1950	560	automat.
БОПГ-1	250	250	1340	555	1950	540	automat.
БОПГА	450	100	1340	510	1950	550	full automat.
БОПГА-1	450	100	1340	510	1950	550	not full automat.



## Installation of prepare impulse gas УПИГ for drying and purifying natural gas before using to control lock armature on site of gas branch

Index	Capacity, m <sup>3</sup> /h	Working pressure, kgf/cm <sup>2</sup>	Dimensions, mm			Mass, kg	Note
			Length	Width	Height		
in container	300-750	55-100	3100	2100	2500	2500	full or not full automation
without container	300-750	55-100	1340	1000	2100	900	

УПИГ supply gas feed in pressure range from 40 till 100 kgf/cm<sup>2</sup> with delivery from 300 till 750 m<sup>3</sup>/h. УПИГ is delivered in container or without container in 8 modifications of complete set.

## Installation of prepare fuel, start and impulse gas УПГ:

- for prepare start and fuel gas for gas transfer units (ГПА) with drive of blowers by gas turbines (ГТУ);
- for prepare impulse gas using for pneumatic control armature.

Full automated installation.

Installation is delivered in unit-container form in full manufacturer preparing or in technology modules for assembly in customer building.

Capacity УПГ – in range 20.000... 40.000 m<sup>3</sup>/h.

## Piston detanders:

- for natural gas liquation;
- for feeding air cooling with temperature from –20° C up to –150° C



## Gas-balloon apparatus for using compressed natural and liquated oil gas in car engines as a motor fuel

Working medium	Engine volume, L	Car run, km	Kit mass (without balloon), kg
Compressed natural gas	2,5	250	15
	4,2-6,0	260-300	50
Liquated oil gas	2,5	450	12
	4,2-6,0	545-500	50



## Shipboard tonnage equipment with electrodrive

Mechanism type	Traction, kN (тп)	Power, kW	Dimensions, mm			Mass, kg
			Length	Width	Height	
Anchor winch ЛЯЭ 0,5/0,7	5-7 (0,5-0,7)	1,3	960	720	543	334
Double-drum winch special	15 (1,5)	4,8	1730	1500	1325	1410
Winch ЛЭР СПУ 5/80	5 (0,5)	1,5	445	371	350	90,5
Crane-beam with winch ЛЭР СПУ 5/80	5 (0,5)		2997	605	2460	282
Drive unit special	15 (1,5)	4,8	985	705	278	344

## Ship's armature made of light alloys:

- stop, unreturn-stop, unreturn valves;
- drain, pass cocks;
- stop valves with an electric drive;
- deck bushes;
- air, oil, fuel filters.

**Joint-stock company "COMPRESSOR" is opened for expansion of contractes and offers different types of cooperation:**

- DELIVERY OF OUR PRODUCTS AND SPARE PARTS;
- SERVICE AND REPAIR;
- MANUFACTURE AND DELIVERY DIFFERENT SPRINGS TO CUSTOMER'S DRAWINGS;
- WORK OUT AND INTRODUCTION OF NEW DESIGNS;
- ISSUE OF PRODUCTION ACCORDING TO CUSTOMER'S DOCUMENTS.